



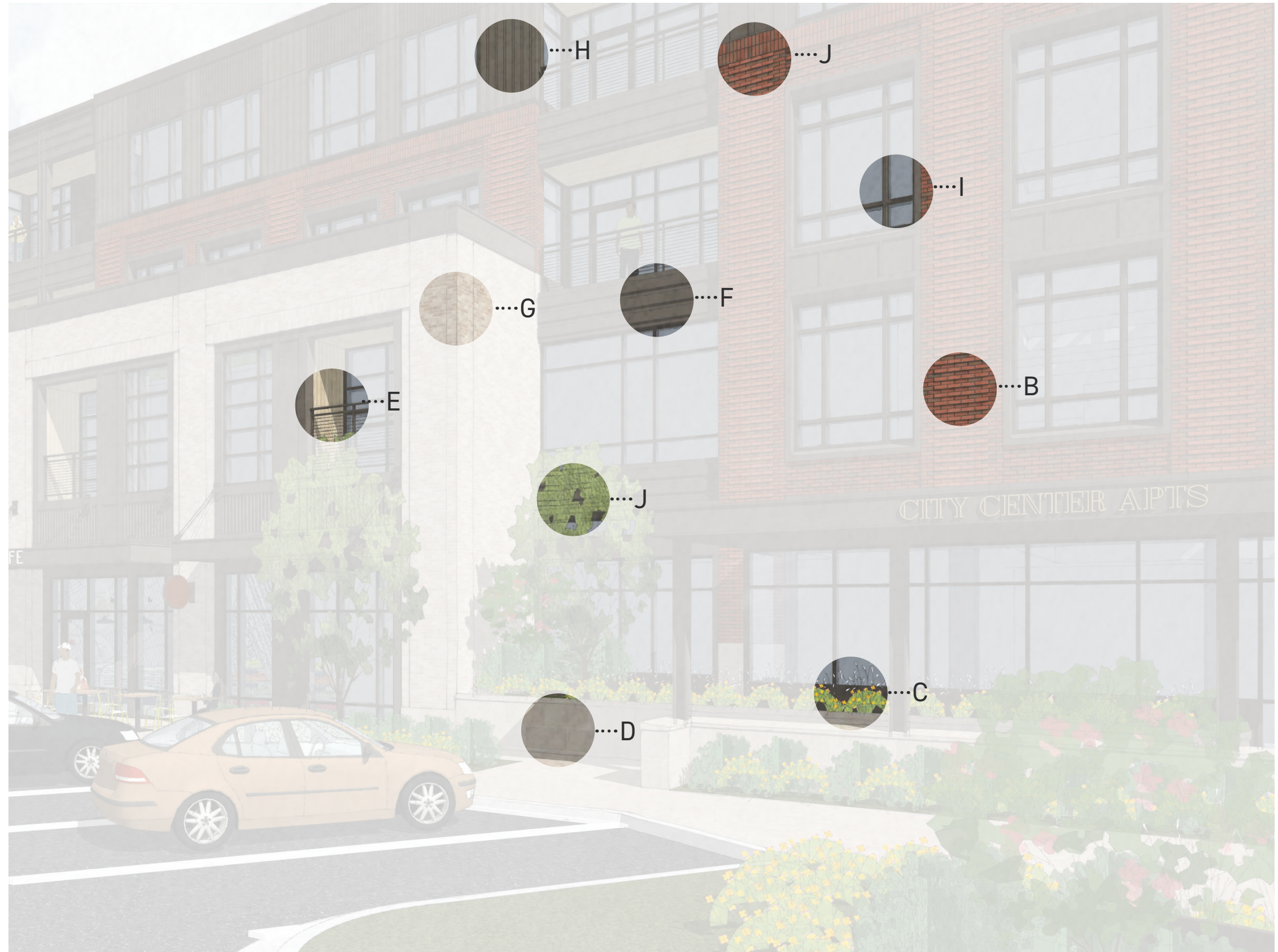
PUD APPLICATION ADDENDUM  
CITY CENTER APARTMENTS

27 OCTOBER 2022

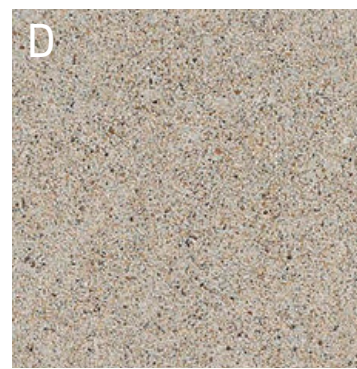
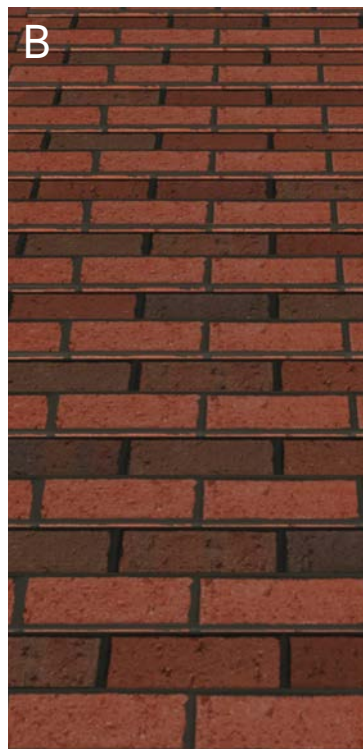
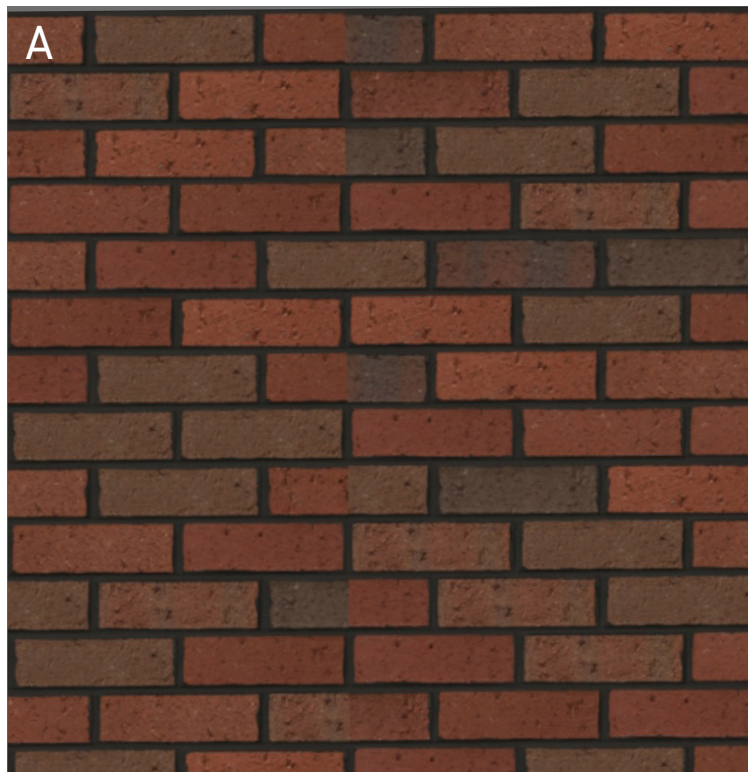
MATERIALS \_\_\_\_\_ 2 - 3  
SOUTH FACADE RENDERINGS \_\_\_\_\_ 4  
SETBACKS DIAGRAM \_\_\_\_\_ 5

## Conceptual Materials Diagram

- A. Primary Modular Brick
- B. Primary Modular Brick- Textural Installation
- C. Flowering Plants
- D. Light Tan Cast-Stone Base
- E. Synthetic Wood-Look Panel Accents
- F. Horizontal Metal Cladding Accents
- G. Secondary Modular Brick W/ Soldeir Course Accents
- H. Vertical Metal Cladding
- I. Metal Trim
- J. Soldier Course Accents
- I. Deciduous Trees and Shrubbery



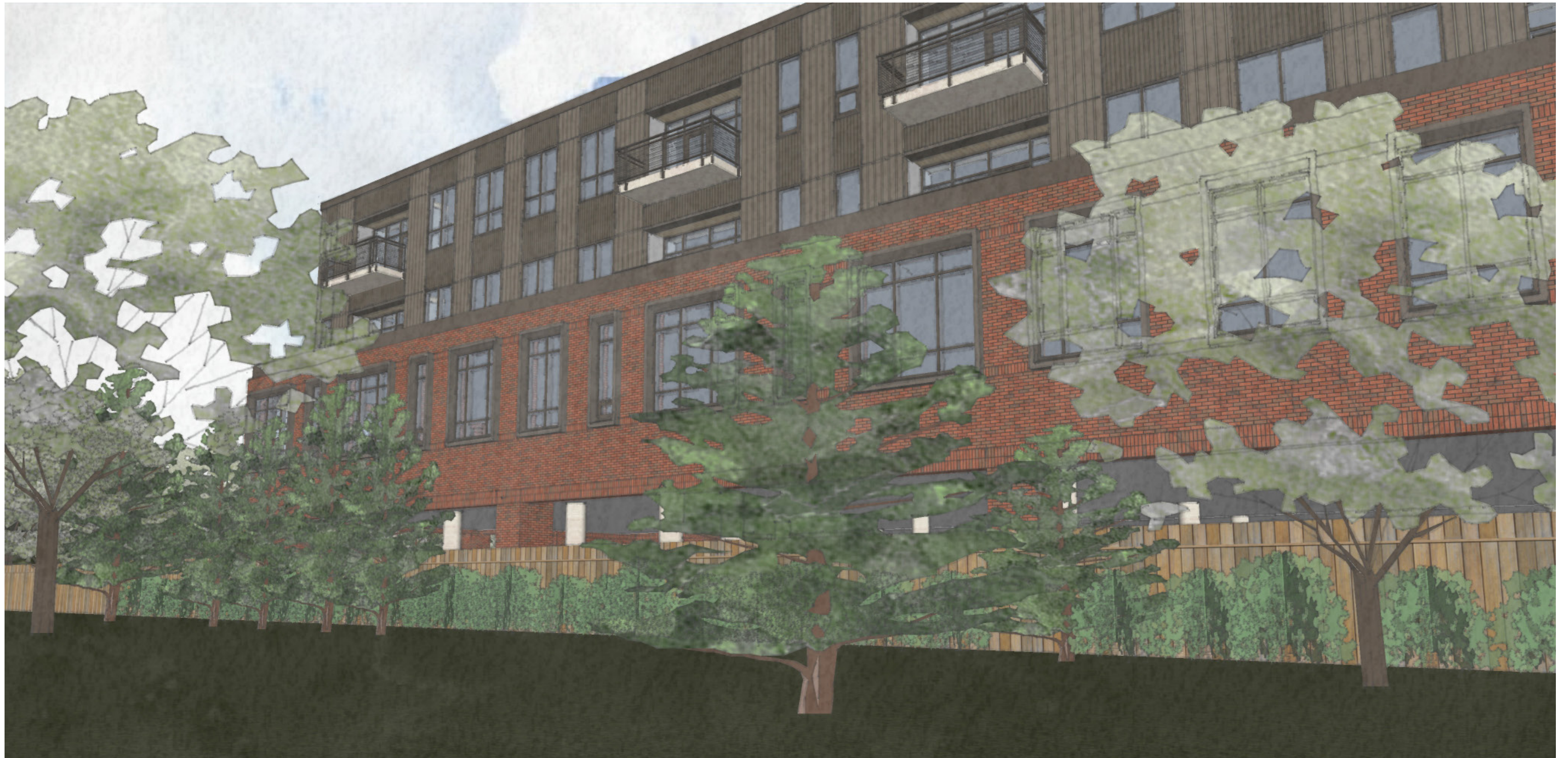




## Conceptual Material Palette

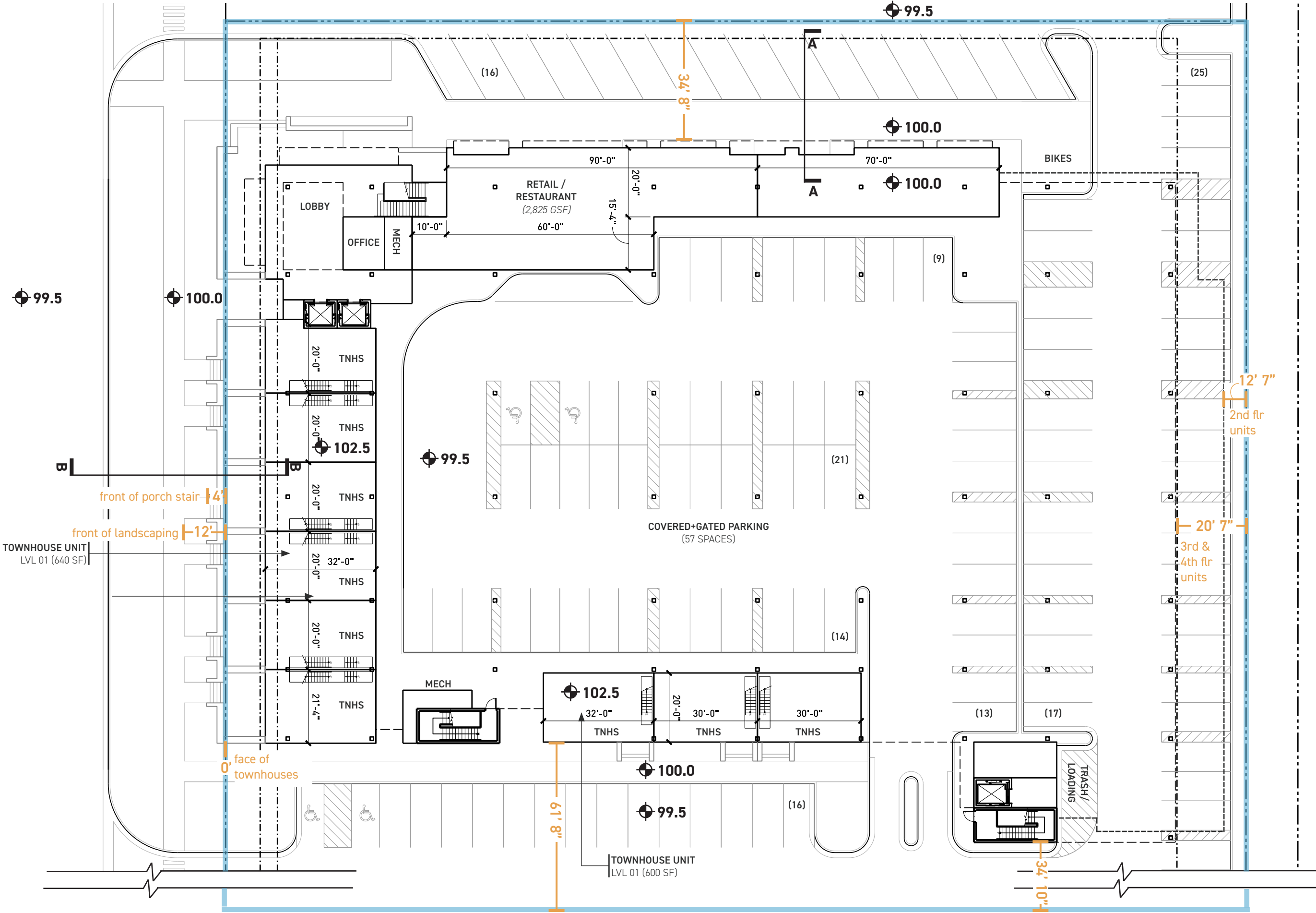
- A. Primary Modular Brick
- B. Primary Modular Brick- Textural Installation
- C. Flowering Plants
- D. Light Tan Cast-Stone Base
- E. Synthetic Wood-Look Panel Accents
- F. Horizontal Metal Cladding Accents
- G. Secondary Modular Brick W/ Soldeir Course Accents
- H. Vertical Metal Cladding
- I. Metal Trim
- J. Soldier Course Accents
- K. Deciduous Trees and Shrubbery





NEFF STREET SIDE, EXTERIOR RENDERING





11,840 GSF